



NORRENBERGER INVESTMENT  
& CAPITAL MANAGEMENT  
LIMITED





# NORRENBERGER INVESTMENT AND CAPITAL MANAGEMENT LIMITED

Norrenberger Investment and Capital Management Limited (NICML) is a registered fund and portfolio manager with the Securities and Exchange Commission to manage investments across various asset classes for its individual and institutional clients. The investment management sub-group provides investment management services and offer investment products across all major asset classes to a diverse set of institutional and individual clients. NICML also offers wealth advisory services, including portfolio management, financial counseling and brokerage and other transaction services to high-net-worth individuals and families.

# ABOUT NORRENBERGER FINANCIAL GROUP

Norrenberger is an industry leading, Integrated Financial Services Group that provides individuals and institutions with a comprehensive range of financial products and services including Asset Management, Investment Banking, Pensions, Securities Trading, Insurance and Development Finance; tailored to meet and exceed our clients' needs and expectations.

We are guided by our mission to positively unlock the opportunities in the society for our clients and stakeholders. We are passionate about the strength of our brand and our vision – to simplify wealth creation for our clients and our people, through the benefits we bring and the results we achieve. To do this, we work by a set of values that enable us to live out our purpose of empowering the people and organization we work with.

At Norrenberger, we unlock opportunities in our society by providing cutting edge investment options and access to alternative financing which in turn allows people to bring their innovative ideas to life and expand their existing businesses. Our focus is to continue to create financial asset classes targeting the need of every single household in Nigeria. By 2025, we hope to have delivered at least one financial solution to every household.

Our component companies are licensed and regulated either by the Central Bank of Nigeria (CBN), Securities and Exchange Commission (SEC), Nigerian Exchange Limited (NGX), National Pension Commission (PENCOM) or National Insurance Commission (NAICOM).



# OUR VALUES



**F**

## Friendliness

Friendliness is the bedrock on which we build our relationships.



**I**

## Innovation

We are dedicated to evolving as a people and providing better and improved solutions that add value to our clients.



**R**

## Responsiveness

We are responsive to our client's needs and inquiries. Providing solutions and resolutions quickly and efficiently.



**S**

## Simplicity

We've simplified our solutions, making them easy for our clients to adopt and implement.



**T**

## Trust

Integrity is at the core of who we are. On this, we are uncompromising.



- VISION

To simplify wealth creation.

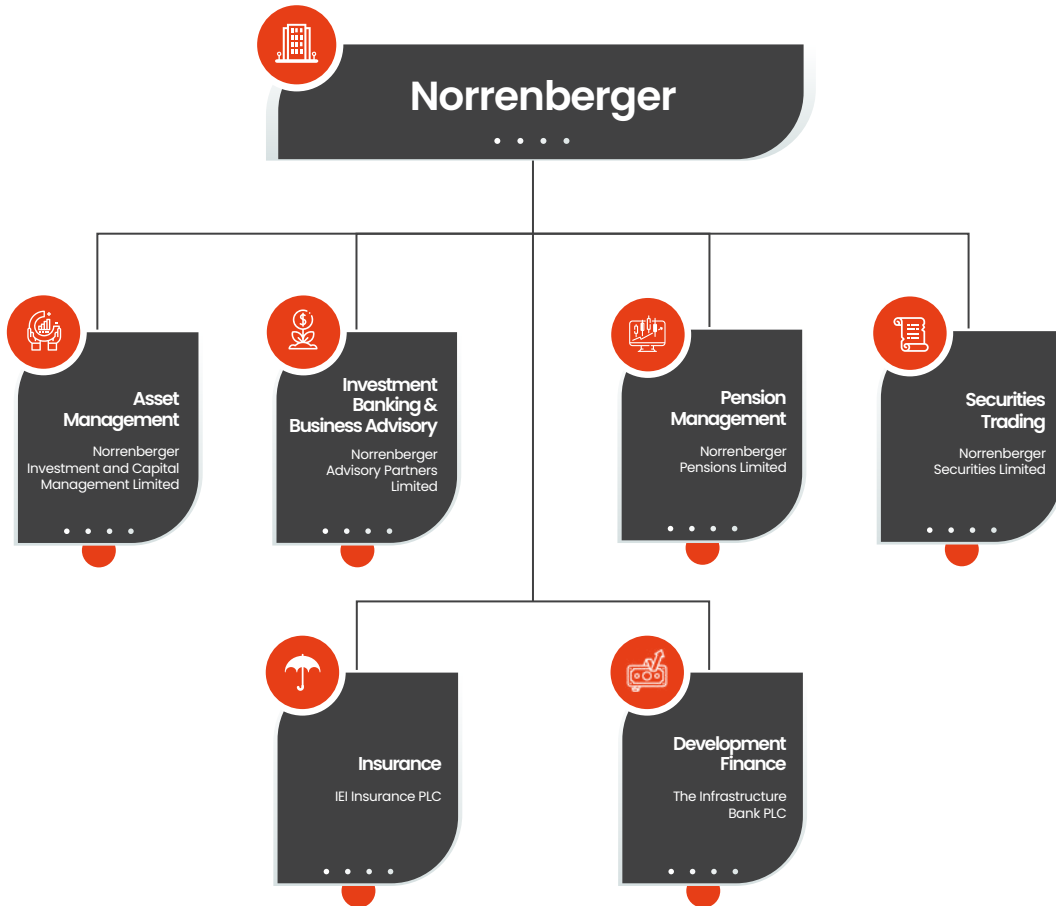


- MISSION

To positively unlock opportunities in society.



# OUR GROUP STRUCTURE



# OUR SERVICES

Norrrenberger Investment and Capital Management Limited (NICML) provides its clients with a range of services.

## Asset Management

Our asset management service is designed to manage the our clients' resources in different asset classes such as capital and money market instruments for the purpose of achieving their investment objectives. Our service aims to mitigate risk while maximizing returns on financial assets. We design our product offerings to help clients determine what investment opportunities to take advantage of, or avoid, to realize their financial goals within the limits of their risk tolerance.

## Portfolio Management

We sit with our clients to determine their investment objectives as well as their risk tolerance and design bespoke strategies to suit their investment profile and return maximization and downside risk monitoring. Backed by a strong research team, our portfolio management service aims to preserve clients' wealth, irrespective of the service type chosen.

Our Portfolio Management service covers:

**Discretionary Portfolio Management** - Clients can entrust their investment portfolios into our capable hands to manage on their behalf. In this case, the decisions on asset allocation to achieve target risk-adjusted returns on the portfolio are at our sole discretion, guided by the terms on risk management,



portfolio rebalancing, amongst others; agreed in your Investment Portfolio Statement.

**Non-Discretionary Portfolio Management** - With this Portfolio Management option, clients along with our trained, responsive and professional Relationship Managers jointly decide on the investment strategies to adopt to drive maximization of returns and achieve the best outcomes possible for the clients' investment portfolio. While the responsibility to execute mandates as received from the client lies with us, the responsibility of making the investment choices after advice and timing of execution lies with the client.

## Research and Investment Advisory

NICML also offers investment advisory services backed by robust financial and economic research to provide clients with insights that guide their investment decisions.

We cover the equity securities listed on the Nigerian Exchange Limited (NGX) as well as fixed income securities such as Government Bonds, Treasury Bills and Commercial Papers. Our stock recommendations are subject to rigorous fundamental and technical analysis to provide our clients with the best short to long term options for investment.



# Availing a Diverse Product Range

## MUTUAL FUNDS

- Norrenberger Money Market Fund
- Norrenberger Dollar Fund
- Norrenberger Islamic Fund

## DISCRETIONARY FIXED INCOME INSTRUMENTS

- Classic Investment Notes
- Discounted Investment Notes
- Targeted Investment Plan
- Treasury Linked Investment Note

## STRUCTURED & ALTERNATIVE FINANCE

- Project Finance
- Structured Trade Finance
- Venture Capital
- Real Estate Finance

## AGENCY FUND MANAGEMENT

We help institutions manage funds using a pre-agreed investment/lending criteria.

## CORPER INVEST

Corper Invest targeted at NYSC corp members who seek to encourage an investment habit, engender an entrepreneurial mindset and help them raise funds for future business ventures.

# MUTUAL FUNDS

## DOLLAR FUND

The Dollar Fund is a collective investment scheme, registered with the Securities and Exchange Commission (SEC). The objective of the Fund is to hedge against currency risk while providing liquidity and competitive returns to investors. The Fund is targeted at Retail Investors, High Net-worth Individuals, Africans in the diaspora, Local and Foreign Institutional Investors seeking Dollar dominated investments. The Fund invests in Sovereign & Corporate Eurobonds and dollar denominated money market instruments.

### FEATURES

- Return on investment is competitive and tax free.
- The Fund is open-ended and constituted under a Trust Deed.
- Quarterly dividend payment or reinvestment.
- Redemption of units within the first 90-day period attracts 20% penalty charge on accrued return.
- Redemption is processed within 5 working days.
- Online access available to monitor fund performance.
- Diversified portfolio in dollar denominated instruments.
- Minimum subscription is 5 units and subsequent addition of 1 unit at the prevailing price per unit.

## MONEY MARKET FUND

The Money Market Fund is a unit trust scheme, registered with the Securities and Exchange Commission (SEC). The Fund invests in Nigerian short-term money market instruments such as Federal Government Treasury Bills, Bankers' Acceptance, Commercial Papers, Certificate of Deposit, and other instruments.

### FEATURES

- Diversified portfolio in money market instruments.
- Return on investment is tax free.
- The Fund is open-ended with ease of entry and exit.
- Dividend is paid quarterly.
- Redemption takes 2-3 working days.
- Minimum subscription amount is N5,000.00 and subsequent investment contribution as low as N1,000.00.

## ISLAMIC FUND

The Norrenberger Islamic Fund (NIF) is a unit trust scheme registered with the Securities and Exchange Commission (SEC). The Fund is targeted primarily at investors who have a medium term investment horizon and are conscious of their belief in Shariah principles.

### FEATURES

- Return on investment is competitive and tax free.
- The Fund is open-ended and constituted under a Trust Deed.
- Quarterly dividend payment or reinvestment option.
- Redemption of units within the first 180-day period attracts 20% penalty charge on accrued return.
- Redemption takes 2-3 working days.
- Online access available to monitor fund performance.
- Diversified portfolio in Sharia Compliant Instruments.
- Minimum subscription amount is N5,000.00 and subsequent investment contribution as low as N1,000.00.

# CLASSIC INVESTMENT NOTES

## REGULAR

Classic Investment Note is an investment option that provides liquidity, capital preservation and competitive returns. Returns are compounded monthly, quarterly, semiannually or at maturity.

### FEATURES

- Available in 30, 60, 90, 180, 270 and 365 days' tenors.
- Minimum investment amount is N100,000.00.
- Investment certificate can be used as a supporting document to access loans, visas and other applications.
- Competitive return on investment.

## TARGETED

The Targeted Investment Plan is a structured plan which gives investors an opportunity to invest towards a short to medium term goal with a specific future date. The goal and target date determines contribution amount to the investment until execution date. Investment is compounded monthly and all funds are paid on target date.

### FEATURES

- Available in 180, 270 and above 365 days' tenors.
- Minimum investment amount is N50,000.00.
- Investment certificate can be used as a supporting document to access loans, visas and other applications.
- Competitive return on investment.

## STRUCTURED

The Classic Structured Investment Note is a product that invests in carefully selected low-medium risk assets such as commercial papers, short-term debt notes and alternative assets bonds, to provide liquidity, competitive returns and safety of funds.

### FEATURES

- Available in 90, 180, 270, 365 days and above 365 days' tenors.
- Minimum investment amount is N1,000,000.00
- Investment certificate can be used as a supporting document to access loans, visas and other applications.
- Attractive return on investment.



### **NORREN MEDIUM TERM INVESTMENT NOTE (NORREN-MTIN)**

The Medium Term Investment Note is designed to provide investors with an opportunity to benefit from highly competitive returns generated from a diversified investment portfolio. Investors can access a diversified portfolio with risk-adjusted returns higher than the regular money market investments.

#### **FEATURES**

- Attractive interest rates.
- Bi-annual interest payment.
- Investment can serve as collateral for loans.
- Investment Note is available in 18–36 months tenor.
- Early termination or part termination is allowed with a charge to interest only.
- Minimum investment amount is N1,000,000.00

### **TREASURY LINKED INVESTMENT NOTE**

The Treasury Linked Investment Note is a product which affords investors the opportunity to invest in a portfolio mainly made up of Treasury Bills and FGN bonds. Investors can earn returns on their investments upfront (discounted); or compound the returns and earn it with the principal, at the maturity of the investment.

#### **FEATURES**

- Capital preservation.
- Investment certificate can be used as a supporting document to access loans and visa applications.
- Available in 91, 182, 364 days and above 364 days' tenors.
- Allows roll-over when investment matures.
- Early termination or part termination is allowed with a charge to interest only.
- Minimum investment amount is N1,000,000.00.



## CORPER INVEST

Corper Invest is a two pronged investment solution and venture capital product targeted at NYSC corp members and recent graduates. It is specifically designed to provide a soft landing for entrepreneurial pursuits for corp members and recent graduates.

### FEATURES

- Investment gives access to Venture Capital cash backed funding opportunity of up to 50% of total investment for Corp members who invest a minimum of N100,000 by the end of service year.
- Minimum investment amount is N5,000 with no penalties on exit before end of investment period.
- Access to free financial advisory from a team of business and financial experts.
- Investors of this product will be migrated immediately to another product upon completion of their service year.
- Capital preservation and attractive returns.

## NORREN TRADE MASTER

Norren TradeMaster is a discretionary investment targeted at the informal sector, including SMEs, entrepreneurs, market associations, unions and other businesses. The product is designed to provide access to financing options to the informal market, thus, deepening financial inclusion.

### FEATURES

- Access to loan of up to N500,000.00.
- Provides short term bridge financing to help the borrower expand and grow their business(es).
- Low entry amount of N5,000.
- Provides financial investment inclusion for the informal sector of the economy.
- Competitive return on investment.
- Access to free business advisory service.

## NORREN KICKSTART ACCOUNT

The Norren Kickstart Account is designed to aid guardians in making medium to long-term investments to support their children or ward's education or entrepreneurial dream.

### FEATURES

- Beneficiaries can have access to Norrenberger's quarterly entrepreneurship focused seminars and trainings.
- Contributor can have access to cash backed facilities of 60% of the total available balance in the account.
- Withdrawal up to 35% of total account balance annually.
- Access cash backed facilities for beneficiaries' school fees or medical expenses.
- Competitive return on investment.
- Investment tenor is 20 years minus the child's age.
- Minimum initial deposit of N100,000.00 and subsequent minimum contribution of N20,000.00
- Balance on account can be transferred to the child at age 20.
- Insurance and other support service available.

This service is designed to specifically meet unique capital needs not typically covered by traditional lending. We can design new funding instruments to help transform cash flows and reshape the liquidity structure of balance sheets through securitization, thus allowing our clients to finance projects, by increasing short-term liquidity.

Structured finance deals with financial lending instruments that work to mitigate serious risks related to complex assets. For most, traditional tools such as mortgages and small loans are sufficient. However, borrowers with greater needs, such as corporations, seek structured finance to deal with complex and unique financial instruments and arrangements to satisfy substantial financial needs.

## SOME OF OUR ALTERNATIVE INVESTMENT SOLUTIONS INCLUDE:

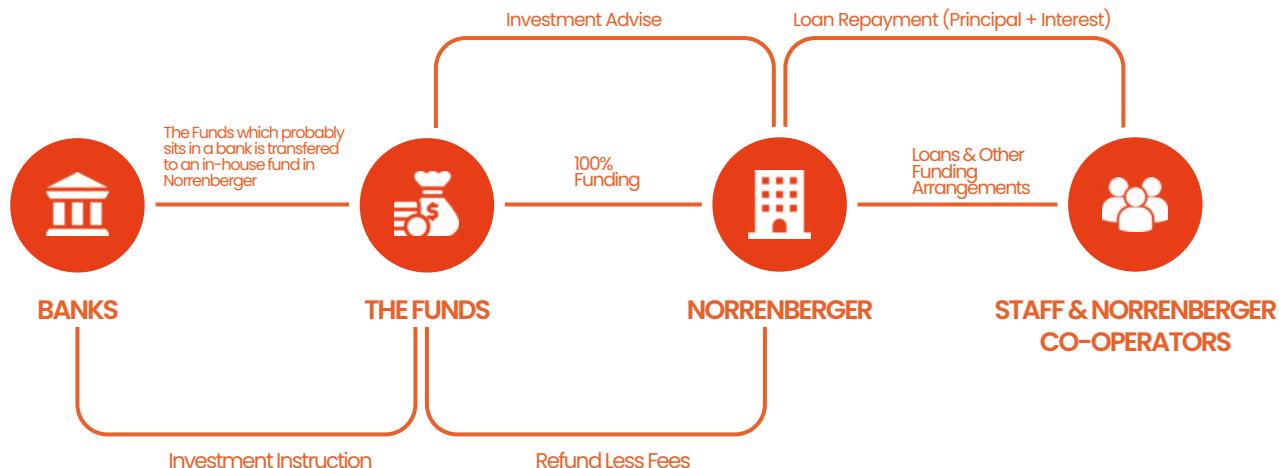
**Project Finance:** A form of syndicated finance designed for long-term infrastructure and industrial projects often involving governments. We play a significant part in funding projects in various industrial sectors, catalyzing public and private partnerships and reducing project risk using a mix of government credits, insurance and private lending

**Structured Trade Finance:** A specialized short-term or medium-/long-term financing against commodity trade flows. It typically takes the form of pre-payment financing or pre-export financing, structured around the supply chain and commercial terms of customers, and may use export contracts, trade receivables and collection accounts as collateral.

**Venture Capital:** We provide early-stage and late-stage venture capital financing through direct investments by investing in promising companies at an earlier stage. We provide developmental support for high-impact business opportunities and capital for private enterprises' long-term growth.

**Real Estate Finance:** This can be utilized by property owners to optimize their balance sheets, as well as by Real Estate Investment Trusts (REITs) and other real estate businesses to acquire properties efficiently. We design financing proposals to meet our clients' specific needs based on an analysis of factors such as the property type, location, purchase price, etc.

# AGENCY FUND MANAGEMENT

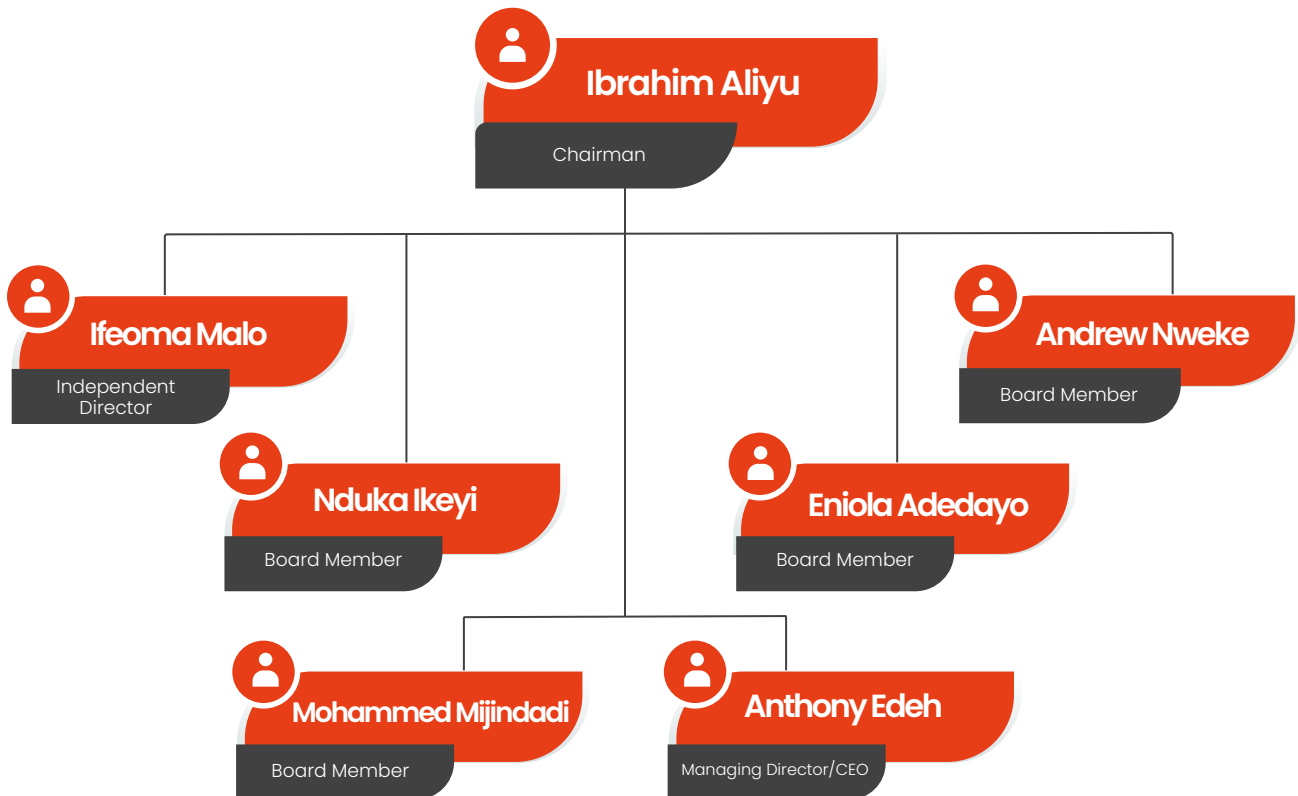


We understand Organizations and Cooperative Societies pool funds to be used for the benefit of their staff and members. However, administering the pooled funds is usually marred by irregularities. We help institutions manage such funds using a pre-agreed investment/lending criteria.

## FEATURES AND BENEFITS

- Companies who have a pool of funds for the benefit of their staff invest the funds with Norrenberger.
- Norrenberger manages the funds to meet pre-agreed interest rates.
- On request for funds (payment of investment or loan) by a cooperator or employee, through the Company/Society representatives, Norrenberger pays out the specified amount based on pre-agreed terms and conditions.
- Risk management by asset or portfolio diversification.
- Balanced risk-return curve.
- Equity and fairness in loan granting process.
- Increases staff and cooperators confidence.
- Professionally managed investment with attractive interest rates.
- Administration fee of 1-2% of asset under management applies based on size of portfolio.

# OUR BOARD STRUCTURE





## OUR BOARD OF DIRECTORS



**Ibrahim Aliyu Bala** | Chairman, Board of Directors

Ibrahim is the Group Executive Director in charge of Business Development at Lagos Deep Offshore Logistics (LADOL) Base.

Ibrahim is passionate about building businesses that positively impact society and strives to continuously empower individuals through education and job creation.

He has over twenty years' experience in management and engineering, dedicating his time and expertise in leading successful business ventures. He served as the past Managing Director of IBK Services Limited, and Director of Niya Consultancy, Niya Engineering Limited, Mega Co & Integration and SHI\_MCI FZE.

He holds a B.Eng. in Electrical Engineering from Ahmadu Bello University, Zaria. He is a member of the Nigerian Society of Engineers (NSE).



## Tony Edeh | Managing Director/CEO

Tony is a seasoned Financial Analyst & Venture Capitalist.

He worked as the Executive Director and Chief Investment Officer (CIO) of New Frontiers Developments; a venture capital investment firm focused on SMEs.

His wealth of experience ranges from Investment & Portfolio Management, Strategy, Financial Risk Management, Modelling, Financial Reporting and Operations Management. In his role as CIO of New frontiers Developments, Tony originated and executed several landmark investments and private equity deals which has gained international recognition. He has worked on several green and brownfield transactions covering Oil & Gas, Power, Agriculture, Real Estate, Hospitality, Healthcare, Technology, Financial Services and Impact Investing. Tony was part of the leadership team that successfully transformed an ailing mortgage bank and positioned it as one of the major lenders in the Nigeria financial services sector.

He started his career with the audit firm of KPMG Professional Services (formerly Arthur Andersen) where he spent nearly a decade. While at KPMG, he led various risk management projects on Basel II, Stress Testing Financial Institutions, Asset and Liability Management and Credit & Market Risk Management. He was also accredited by KPMG International to provide advisory services to clients in Credit Risk and Economic Capital Modelling.

He graduated from the University of Ilorin with a degree in Computer Science as the overall best student and attended INSEAD Business School (France and Singapore) for his MBA where he was an INSEAD-Goldman Sachs Scholar. While at INSEAD he was the leader of the Emergent Young African Entrepreneurs. He is also an Alumni of the Wharton Program on International Housing Finance. He is a Fellow Chartered Accountant (FCA).

He has also undertaken several professional training courses across the globe. In the year 2014, he was nominated amongst six Nigerians for the Desmond Tutu Fellowship program.

He currently sits on the board of several companies in the financial services industry.



OUR BOARD OF DIRECTORS



**Andrew Nweke | Board Member**

Andrew is the Founder and Managing Director of Amborg Global Resources (AGR) Limited; a leading engineering company offering integrated construction solutions and related services across Nigeria.

AGR was founded in 2008 and offers construction services, including facilities management and real estate development. Andrew is also an astute investor with interests spanning across the Oil & Gas, Telecommunications, Agriculture and Hospitality sectors of the economy.



**Ifeoma Malo | Independent Director**

Ifeoma is the Chief Executive Officer and the Co-founder of Clean Technology Hub and Clean Tech Incubation and Acceleration Foundation.

She is the Country Campaign Director for Power for All and the co-founder of Clean Tech Hub and the Energy Innovation Center, Abuja. She previously held the position of Senior Policy Adviser on Energy Policies, Regulations and Partnerships at the Ministry of Power in Nigeria where she led a number of policy and partnership initiatives for the Nigerian power sector including cultivating and managing relationships with the World Economic Forum, World Energy Council, the Europe Energy African Partnership, The West African Power Industry Convention and the African Utilities Week (AUW). Her prior work experience also includes being the special assistant to the Minister of Finance in Nigeria.

She is an adjunct professor at the University of Massachusetts, Boston, an associate at the Boston Public Health Commission (BPHC); and a consultant at the Boston based Global Biotechnology firm – Genzyme Corporation. Ifeoma's work is focused on the areas of Global Policy, Project Design & Strategy and Stakeholder Partnership Initiatives. She is a qualified attorney with graduate advanced degrees in Law, Business and Public Policy. She is also an African Leadership Initiative PIA Fellow (2012); A Desmond Tutu Fellow (2013); a Crans Montana New Leaders for Tomorrow Fellow (2014) and a Dwight Eisenhower Fellow (2015).



OUR BOARD OF DIRECTORS



**Nduka Ikeyi** | Board Member

Nduka specializes in representing indigenous and multinational clients on an extensive range of regulatory, transactional and tax-related matters.

He has over 20 years' combined experience in teaching, research, litigation, commercial and corporate legal advisory services, tax practice, public sector administration and public-sector consultancy. Nduka worked in the tax practice of KPMG Professional Services before founding Ikeyi, Shittu & Co. in 2005. He was also the Attorney General and Commissioner for Justice, Enugu State of Nigeria, from July 2007 to May 2011.

Nduka has published several articles in local and international journals on commercial and business law, especially in the areas of taxation, arbitration, corporate governance, foreign investment regulation and technology transfer. He has also been engaged as speaker at various seminars and training workshops.

He obtained a Bachelor's Degree from the University of Nigeria and an LLM degree from The London School of Economics and Political Science.



**Eniola Adebayo** | Board Member

Eniola is the Chief Executive Officer of Goomek Integrated Services; a financial & investment consultancy firm based in Abuja.

Eniola's areas of interest include Venture Capital, Start-up Funding and Leveraged Buyouts. Prior to joining Goomek, Eniola had over 10 years' experience working in Lagos Internal Revenue Service (LIRS) and DHL Nigeria.

Eniola holds a Bachelor's degree in Psychology from the University of Lagos and an MBA in Project Management from Nile University, Abuja. She plays a major role in social projects with major interests in gender equality and human rights.





### Mohammed Mijindadi | Board Member

Mohammed Mijindadi Before his latest appointment has led the Gas Power Systems unit at GE Power as Managing Director since 2015. He steered the growth of an expanded suite of new unit gas power products and new unit service agreements for optimal customer life-cycle value.

Before assuming this role, Mohammed worked as the Director of Sales for Sub Saharan Africa between 2014 and 2015.

Mohammed began his GE career in 2007 after previous stints as a Project Engineer at South-eastern Pennsylvania Transportation Authority (SEPTA) and Graduate Assistant at Penn State University.

He went on to aggregate over 13 years of cognate industry experience with GE spanning various roles which included working as an Experienced Commercial Leadership Program (ECLP) Associate and Commercial (TST) Leader for English West & East Africa.

Mohammed possesses a blend of Nigerian and American tertiary education. He is an alumnus of Ahmadu Bello University (Zaria) and Temple University (Philadelphia), where he earned BSc degrees in Civil Engineering. He also holds an MBA in Corporate Marketing Management from Penn State University, Pennsylvania.

## OUR LEADERSHIP



**Tony Edeh | Managing Director/CEO**

Tony is a seasoned Financial Analyst & Venture Capitalist.

He worked as the Executive Director and Chief Investment Officer (CIO) of New Frontiers Developments; a venture capital investment firm focused on SMEs.

His wealth of experience ranges from Investment & Portfolio Management, Strategy, Financial Risk Management, Modelling, Financial Reporting and Operations Management. In his role as CIO of New frontiers Developments, Tony originated and executed several landmark investments and private equity deals which has gained international recognition. He has worked on several green and brownfield transactions covering Oil & Gas, Power, Agriculture, Real Estate, Hospitality, Healthcare, Technology, Financial Services and Impact Investing. Tony was part of the leadership team that successful transformed an ailing mortgage bank and positioned it as one of the major lenders in the Nigeria financial services sector.

He started his career with the audit firm of KPMG Professional Services (formerly Arthur Andersen) where he spent nearly a decade. While at KPMG, he led various risk management projects on Basel II, Stress Testing Financial Institutions, Asset and Liability Management and Credit & Market Risk Management. He was also accredited by KPMG International to provide advisory services to clients in Credit Risk and Economic Capital Modelling.

He graduated from the University of Ilorin with a degree in Computer Science as the overall best student and attended INSEAD Business School (France and Singapore) for his MBA where he was an INSEAD-Goldman Sachs Scholar. While at INSEAD he was the leader of the Emergent Young African Entrepreneurs. He is also an Alumni of the Wharton Program on International Housing Finance. He is a Fellow Chartered Accountant (FCA).

He has also undertaken several professional training courses across the globe. In the year 2014, he was nominated amongst six Nigerians for the Desmond Tutu Fellowship program.

He currently sits on the board of several companies in the financial services industry.



### **Nkiru Chime** | Group Chief Financial Officer

Nkiru is a seasoned professional with over 15 years' cognate experience in the financial services industry covering Finance, Audit and Advisory.

She started her career in KPMG, where she rose to the position of Manager, Audit and Business Advisory. She further worked as a Financial Controller in ASO Savings and Loans Plc, and as a Chief Financial Officer at Abuja Leasing Company. An astute Finance professional, she served on the Insurance Technical Board while at KPMG.

She has a BSc. In Microbiology from the University of Benin. She is an Associate Chartered Accountant (ACA) from the Institute of Chartered Accountants of Nigeria (ICAN), and is an alumna of the prestigious Wharton Business School (Executive Education), where she undertook the CFO program, "The CFO: Becoming a Strategic Partner".



### **Abigail Utomi** | Business Head, Asset Management

Abigail is responsible for driving the asset management strategy of the organization through process improvement, digital technology, business origination and expansion. Prior to joining Norrenberger, Abigail was a Director at Cordros Trustees Limited, a wholly owned subsidiary of Cordros Capital Limited.

Before her redeployment to Cordros Trustees Limited, she worked in Cordros Securities Limited, where she led business development, strategy and distribution as Head, Abuja Office/Channel Sales in the northern region of Nigeria. She was also responsible for the set up and expansion of the Group's regional office in Abuja which contributed significantly towards the success of the Group. She was the founding Managing Director of Cordros Trustees Limited where she deployed strategies to drive the business to a profitable venture.

Before joining Cordros, she worked in the Private Banking and Retail Divisions at Investment One Financial Services Limited (Formerly GTB Asset Management Ltd) as Team Lead and Kakawa Asset Management Limited, a wholly owned subsidiary of Kakawa Discount House Limited (now FBN Merchant Bank) where she played pivotal roles in team/business set up and business development.

She holds a B.Sc in Accounting from the University of Benin, and a PGD in Information Technology from HIIT. She is a member of the Association of Chartered Certified Accountants (ACCA), United Kingdom, an Associate of the Chartered Institute of Stockbrokers (CIS) and the Chartered Institute for Securities & Investment (CISI) United Kingdom.

## OUR LEADERSHIP



### Ochuko Ogra | Chief Technology and Innovation Officer

Ochuko is a highly skilled technology executive. He is responsible for driving the overall technology strategy through digital transformation and innovation, process automation and robust solutions for the group. He has over 15 years of extensive experience across multiple industries.

Prior to joining Norrenberger, he worked at Cordros Capital Limited as Chief Information Officer, where he was responsible for the company's digital transformation, overall IT strategy, and cybersecurity. Ochuko has held various strategic roles at NCR Corporation, Deloitte, and Access Bank, where he led several technology and digital transformation initiatives. His responsibilities included Technology Advisory, Strategy and Architecture (TS&A), Digital, IT Effectiveness, IT Compliance and Control, Agile, Scrum and Business Analysis, Cybersecurity, and Enterprise Solutions. A Deloitte alumni, his functional expertise covers financial self-service technology implementations, including ATM solutions, Fintech, Core Banking Applications, and the Security, Audit, and Control of IT infrastructure.

He holds a B.Sc in Computer Science (information systems) from Babcock University. He is a Certified Risk and Information Systems Control (CRISC) professional, an ISO 27000 Lead Auditor, an ISO 31000 Risk Manager, and a Certified Scrum Master. He is also a category winner of the 2020 CIO of the Year award.



### Queen Ehi-Ujamhan | Group Head, Finance & Operations

Queen Ehi-Ujamhan oversees the finance and operations functions in Norrenberger. She is a qualified ACCA (Fellow) accountant and a proactive customer-centric finance professional with over 15 years of experience in accounting, project finance, fiscal management, financial reporting, budgeting, and project management.

She has worked with many private and public sector clients across several industries.

Prior to joining Norrenberger she worked with the Debt Management Office (DMO) as a Special Adviser. Queen spent three years at HSBC Bank in the United Kingdom (UK) in various capacities, including as Project Co-Ordinator for the ring-fenced bank project and as Business Analyst on multibillion-pound projects. She previously worked at Ernst & Young (UK) for three years as a Financial Management Associate, where she qualified as a chartered accountant. She also led the project finance delivery for Oskia Jo & Partners Ltd, overseeing and monitoring over 7 active power projects valued at over 2.5 billion Naira.

Queen holds a B.Sc. in Banking and Finance from the University of Benin and a Master's in Business Administration from the University of Warwick. She is an Associate of the Chartered Institute of Information Technology (British Computer Society) and a Fellow of the Association of Chartered Certified Accountants (FCCA).

## OUR LEADERSHIP



### **Samson Omoti** | Head, Legal Services/ Company Secretary

Samson is a solutions-driven and passionate legal professional who currently heads the Legal Services & Company Secretarial Unit of Norrenberger.

He has about 15 years of extensive legal experience in banking and commercial matters and has garnered experience both as External Counsel as well as In-house Solicitor.

Prior to joining Norrenberger, he worked as the Abuja Area Legal Manager of First Bank of Nigeria Limited, where he excelled as a Business Partner and trusted Adviser and represented the Bank in various fora and high-profiled matters. He also previously worked in Skye Bank Plc as a Legal Officer.

Samson started his legal career with Odujinrin and Adefulu Law, before proceeding to G. Elias & Co. where he advised on several transactions focused on Corporate Finance, Structured Finance, Public Offers, Private Placement, Mergers and Acquisition etc.

He holds a Bachelor of Laws (LL.B) from the University of Benin and is a member of the Nigerian Bar Association.



### **Gift Etameta** | Human Resources Manager

Gift Etameta heads the Human Resources Unit, where she is responsible for overseeing the development and implementation of human capital strategy and service delivery.

She has over 7 years' experience which cuts across Recruitment and Selection, Performance Management, Change Management, Organizational Development, Compensation planning and benefit administration, Learning and Development, Employee Relations, Administration and Facility Management.

Prior to joining Norrenberger, she worked as an Executive Search Specialist heading the Investment Banking and Asset Management Unit at Oscar Temple.

Gift is passionate about building a successful and sustainable organization by cultivating a happy and motivated workplace culture that continuously fosters employee productivity and innovation, and rewards hard work, creativity, and commitment to excellence.

She holds a Bachelor of Science (BSc.) degree in Biochemistry from Ambrose Alli University, Ekpoma, and a Master's degree in international human resource management from Rome Business School. She is a member of the Chartered Institute of Personnel Management of Nigeria (CIPM) and a Certified Talent Optimization leader.



# YOUR FUTURE DOES NOT NEED TO BE FOGGY.

Remove uncertainty and catch a glimpse of a beautiful future. With world-class financial investment guidance from Norrenberger, there will be no question about your financial future.



# ACCOLADES



# OUR RATINGS

2022

 **Agusto&Co.**

Research Credit Ratings Credit Risk Management


 nörrenberger



**BBB-**

2021

 **DataPro**

 nörrenberger



**BBB+**

2020

 **Agusto&Co.**

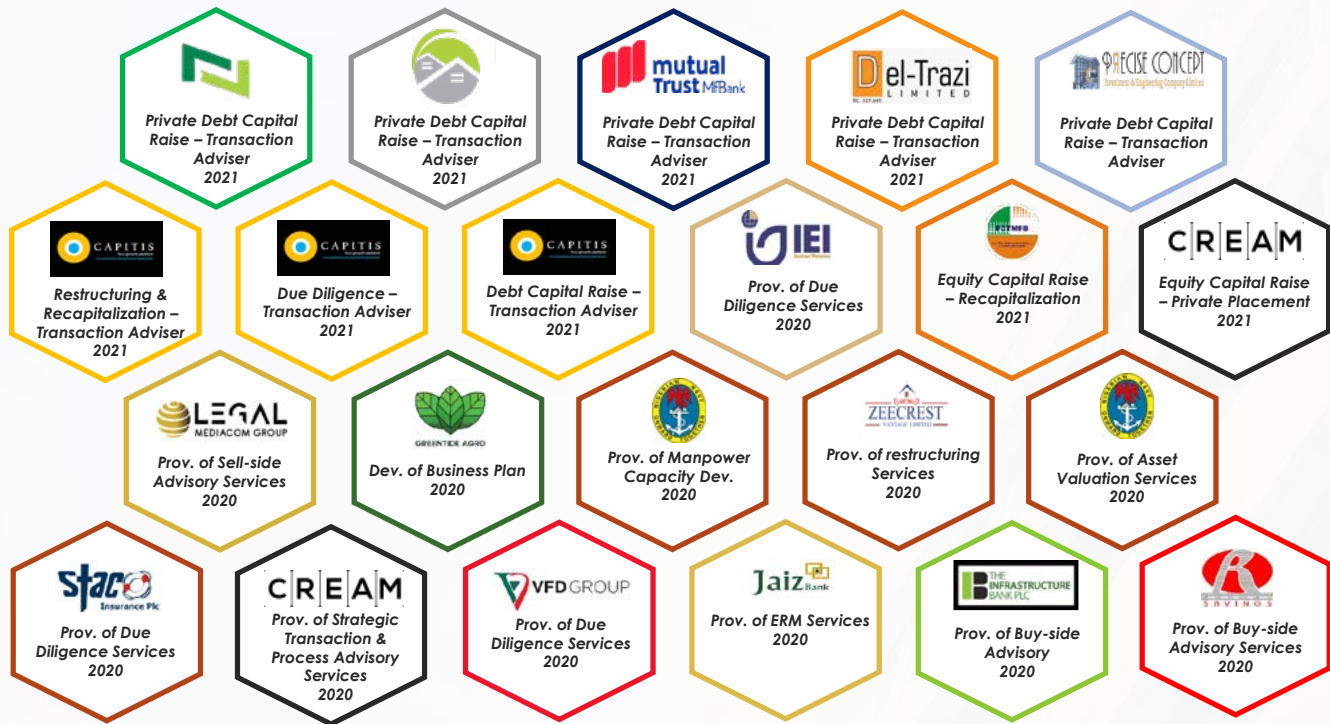
Research Credit Ratings Credit Risk Management

 nörrenberger



**BBB-**

# OUR TRACK RECORD







nörrenberger



# The light at the end of the tunnel should uplift you.

At **Norrenberger**, we are interested in you. With our solid experience in financial services, we are well positioned to help you meet your financial needs today, and tomorrow.

**Let's build a bright financial future together.**





# nörrenberger

INVESTMENTS | OPPORTUNITIES | WEALTH

#### Head Office

11 Volta Street, Off Thames Street,  
Ministers Hill, Maitama, Abuja, Nigeria.  
+234 (0) 908 781 2026  
customerservice@norrenberger.com

#### Lagos Office

4th Floor, FF Millennium Towers, Ligali Ayorinde Street,  
Victoria Island, Lagos, Nigeria.  
+234 (0) 813 864 1702.  
customerservice@norrenberger.com